

A hand is shown from the bottom left, holding a single green leaf. The background is a soft-focus green, suggesting a natural setting. The text is overlaid on the left side of the image.

Introducing...  
GSA's  
Service  
Provider  
Sustainability  
Index

# Industry First: An Index to create a 'currency' of ESG maturity in Business Services and Technology suppliers

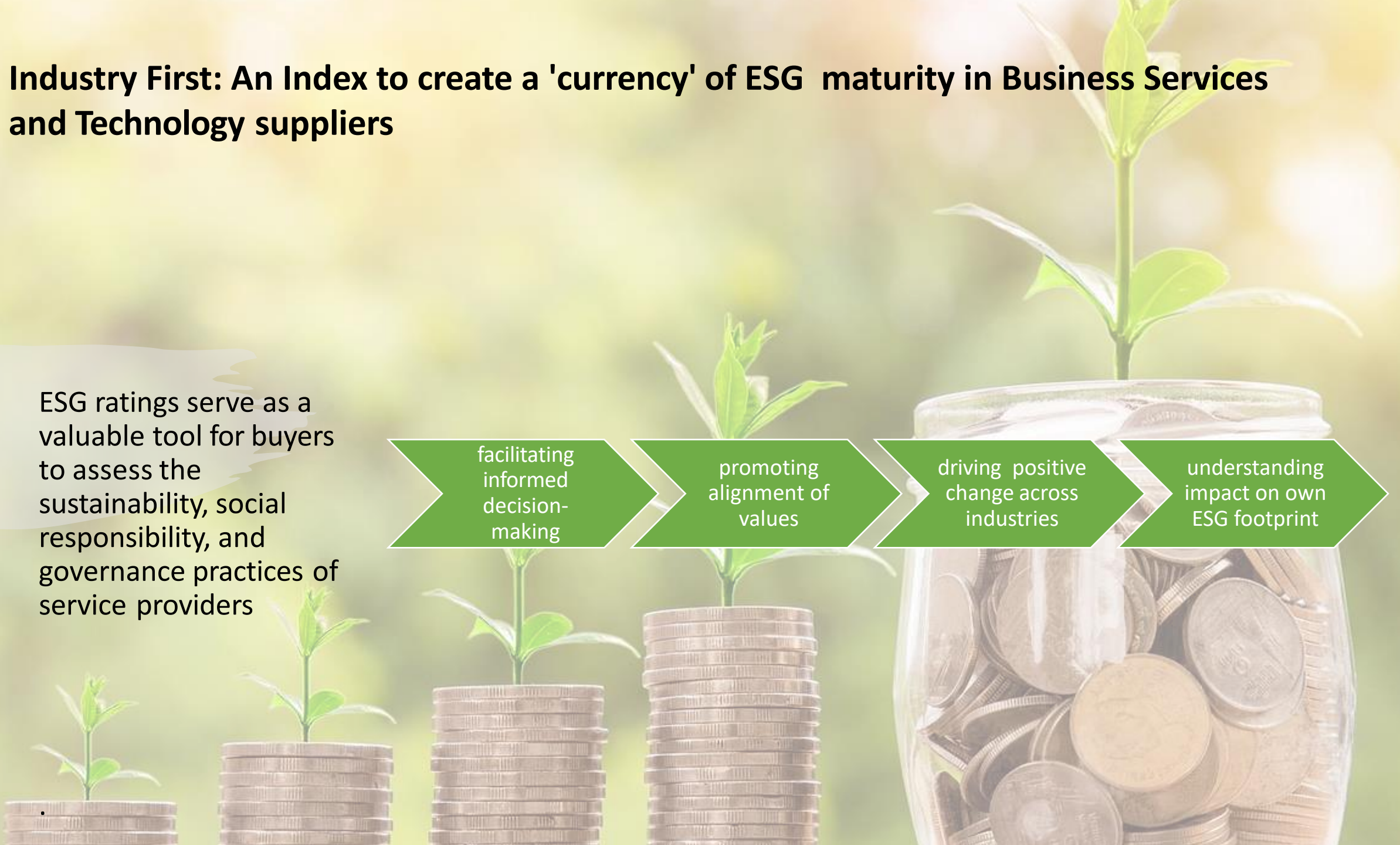
ESG ratings serve as a valuable tool for buyers to assess the sustainability, social responsibility, and governance practices of service providers

facilitating informed decision-making

promoting alignment of values

driving positive change across industries

understanding impact on own ESG footprint



# The Index for Service Providers

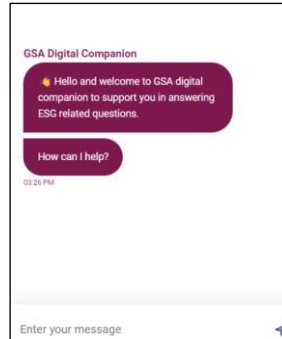
- Industry body conducted ESG maturity assessment, via a comprehensive questionnaire, provides insights for companies
- standardised evaluation, aiding meaningful comparisons and benchmarking
- enables gauging standing among peers, aligning strategies, and identifying gaps for a competitive advantage
- understanding relative position helps businesses make informed decisions, address weaknesses, enhance ESG practices, and demonstrate credibility to investors, stakeholders, and consumers



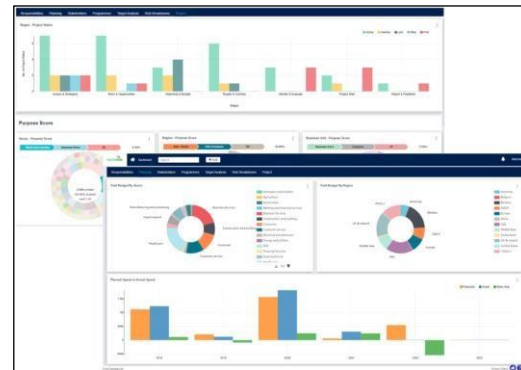
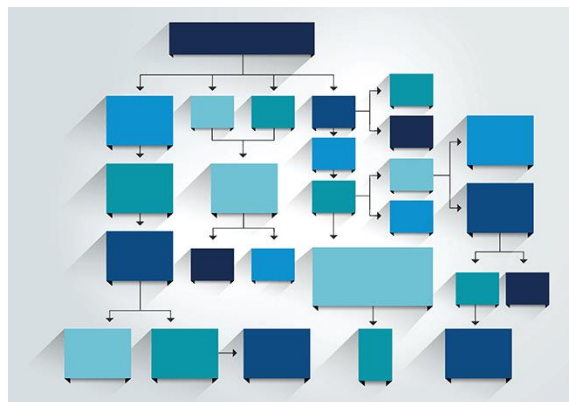
# Comprehensive Survey

A detailed table of contents for an ESG overview survey. It lists various sections such as Environmental, Social, and Governance, with sub-sections and corresponding page numbers. The table is organized into columns and rows, providing a clear structure for the survey content.

# Conversational AI Chatbot makes managing and responding easy



# Your Score



Workflow & Advice

Analysis and insights

Full Maturity Assessment Report

# Introducing GSA's ESG digital companion

The screenshot shows a web browser at the URL `opendialogai.github.io/gsa.html`. The page features the GSA UK logo (Global Sourcing Association) and the text "THE GLOBAL SOURCING ASSOCIATION" and "THE HOME OF THE GLOBAL SOURCING STANDARD". A navigation menu includes links for HOME, ABOUT US, KNOWLEDGE CENTRE, EVENTS, ACTIVITIES, PROFESSIONAL DEVELOPMENT, and CONTENT HUBS. A search bar is visible. A chatbot overlay titled "GSA Digital Companion" is active, displaying a welcome message: "Hello and welcome to GSA digital companion to support you in answering ESG related questions." Below this is a button labeled "How can I help?". The chatbot interface includes a text input field with the placeholder "Enter your message" and a send button. The time "03:26 PM" is shown in the chat window. A "Log in" button and a "Sign Up" link are visible at the top right of the page.

Powered by



**OpenDialog**